

# EARLY IDENTIFICATION GUIDE

IMPLEMENTING DEVELOPMENTAL SCREENING AND SURVEILLANCE INTO PRIMARY CARE



## DID **YOU** KNOW?



The **medical home** is the ideal setting for developmental screening

California ranks

30th

in the country for screening infants and toddlers

44th

for screening children living below the federal poverty level



Only **28.5%**

of children in California receive timely developmental screenings

1 in 4 children

under the age of 6 in California



are at moderate- or high- risk for developmental, behavioral, or social delays



1 in 68 children

are at risk for an autism spectrum disorder



Too often developmental delays go undetected. Developmental screening at AAP recommended well-child visits will catch delays earlier, making treatment more effective.



# The American Academy of Pediatrics Practice Recommends:



**DEVELOPMENTAL SURVEILLANCE** during every well-child visit.



**DEVELOPMENTAL SCREENINGS** at 9, 18, and 24/30 months.




**AUTISM-SPECIFIC SCREENING** at 18 and 24 months



**REFERRAL** for evaluation and early intervention services when a risk is identified

**Using a well-validated developmental screening tool during routine healthcare visits increases referral and identification rates for children with developmental delays and supports linkage to early intervention services.**

## Recommended Tools for Developmental Screening:

	<b>ASQ-3</b> AGES AND STAGES 3RD EDITION <a href="http://brookespublishing.com/asq">brookespublishing.com/asq</a>	<b>PEDS</b> PARENTS' EVALUATION OF DEVELOPMENTAL STATUS <a href="http://PEDStest.com">PEDStest.com</a>	<b>M-CHAT</b> MODIFIED CHECKLIST FOR AUTISM IN TODDLERS, REVISED (M-CHAT-R) <sup>TM</sup> <a href="http://M-CHAT.org">M-CHAT.org</a>	<b>PROVEN PARENT-REPORT METHODOLOGY.</b>  Research shows that parents are reliable reporters of their child's development.
<b>NUMBER OF QUESTIONS</b>	30 (6 each area)	10	20	
<b>VARIETY OF SURVEY</b>	21 age-based forms	Single form, all ages	Single form, all ages	
<b>AGE RANGE</b>	2 months–5 years	0–8 years	16–30 months	
<b>PARENT COMPLETION</b>	<b>10–20 minutes</b>	<b>5 minutes</b>	<b>2–5 minutes</b>	
<b>PROVIDER SCORE &amp; INTERPRET TIME</b>	<b>1–5 minutes</b>	<b>2 minutes</b>	<b>5–10 minutes</b>	
<b>LANGUAGES</b>	English, Spanish, French; ASQ PTI also available in Somali and Hmong	English, Spanish, Vietnamese; Others with license	English, Spanish, Chinese, & Korean; Others with license	

**EASY TO USE AND SCORE**

Screening results that indicate a concern will require further assessment and referral for necessary services.



## Risk factors which may contribute to a delay



Prematurity of less than 32 weeks or low birth weight



Environmental factors such as neglect and abuse



Prenatal or other exposure to drugs, alcohol, or tobacco



Children with an orthopedic, vision, or hearing impairment



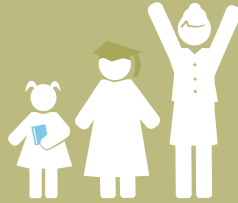
Poor nutrition or difficulties eating



Exposure to lead-based paint

# Why is Developmental Screening in **YOUR** Practice Important?

Screening early leads to more successful long-term outcomes



Children who receive early treatment for developmental delays are more likely to be ready for kindergarten, successful in school, and live independently

**YOU** are often the first line of defense



Approximately 25-30% of problems noted by parents during well-child visits are developmental and behavioral in nature

Families feel supported



Families report higher levels of satisfaction and support for physicians who offer developmental screening

# 1-2-3 of Early ID



## 1. SURVEILLANCE

Monitoring and discussion of any potential delay or concern with development



## 2. SCREENING

Use of a standardized tool to identify children at risk



## 3. EVALUATION & REFERRAL

In-depth identification process and linkage to appropriate supports or services

**BEFORE TURNING 3, CHILDREN SHOULD BE SCREENED A MINIMUM OF THREE TIMES.**



9 MONTHS



18 MONTHS



24/30 MONTHS

## Feedback from an Expert

Ventura pediatrician, Dr. Sun Lee, began using the ASQ-3 in 2011. He has extensive experience with this tool and has found:



Easy for parents



Parents typically only need minor clarifications about how to complete the ASQ-3

Quick to complete



Completion of the tool has never taken him longer than 2-3 minutes

Essential for identification



All evidence indicates that, without a screening tool, physicians often miss many signs of developmental delays



## Screening is **COVERED**

Developmental Screening can be billed using CPT billing code 96110 or ICD-10 Z13.4. This covers the time a physician scores, reviews results, and interprets findings.

Federal health reform law requires insurance plans to cover developmental and behavioral screenings at no cost to children. Medicaid (Medi-Cal) also covers screenings as part of children's preventive services.



# WHEN, WHERE, AND HOW TO REFER

## WHEN to REFER



**WHEN A DEVELOPMENTAL DELAY IS SUSPECTED**

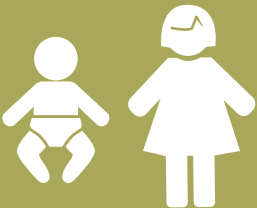


**WHEN A CHILD SCREENS POSITIVE ON A VALIDATED SCREENING TOOL**



**WHEN A CHILD'S PARENT HAS A DEVELOPMENTAL DISABILITY**

## WHERE to REFER DEPENDS ON THE AGE OF THE CHILD



BIRTH to 3 YEARS

**CALIFORNIA EARLY START PROGRAM**  
Coordinated through Regional Centers



3 YEARS to 5 YEARS

**LOCAL SCHOOL DISTRICT**  
Children with an eligible disability may qualify for special education services

**REGIONAL CENTER**  
Children with autism, cerebral palsy, epilepsy or intellectual disability may receive additional services through their Regional Center



BIRTH to 5 YEARS

**HELP ME GROW**   
Providing child development information, follow-up support, resource connections, outreach and care coordination

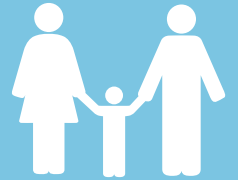
## HOW to REFER

**ANYONE** can refer to Early Start with parental consent for further evaluation



800-515 BABY [earlystart@dds.ca.gov](mailto:earlystart@dds.ca.gov)  
[www.dds.ca.gov/earlystart](http://www.dds.ca.gov/earlystart)

**PARENTS** must request an evaluation to determine eligibility



Contact the child's local school district office or SELPA

Visit [www.dds.ca.gov/RC](http://www.dds.ca.gov/RC) for Regional Center office locations

**ANYONE** may refer a family to Help Me Grow



Visit [www.helpmegrowca.org](http://www.helpmegrowca.org) to contact HMG systems where available



Helping children achieve their optimal, healthy development by offering: screening follow-up support, resource connections, referral assistance and care coordination in multiple languages.  
[www.helpmegrowca.org](http://www.helpmegrowca.org)



[www.first5association.org](http://www.first5association.org)

Adapted from materials by Help Me Grow Ventura County and First 5 Ventura County